

Honeywell

PRODUCT CATALOG



PRODUCTIVITY SOLUTIONS

THE LATEST HONEYWELL PRODUCTIVITY & WORKFLOW SOLUTIONS ▶▶▶▶



RETAIL

WAREHOUSE & LOGISTICS

FIELD SERVICE

HEALTHCARE

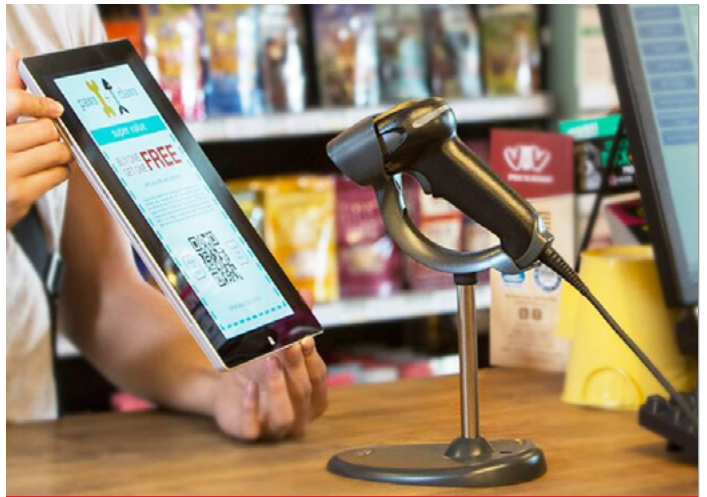
PAR//NER
CARE . TRUST . RESPONSIBILITY



AUTHORIZED DISTRIBUTOR OF HONEYWELL



ENTERPRISE MOBILITY



BARCODE SCANNERS



DESKTOP PRINTERS



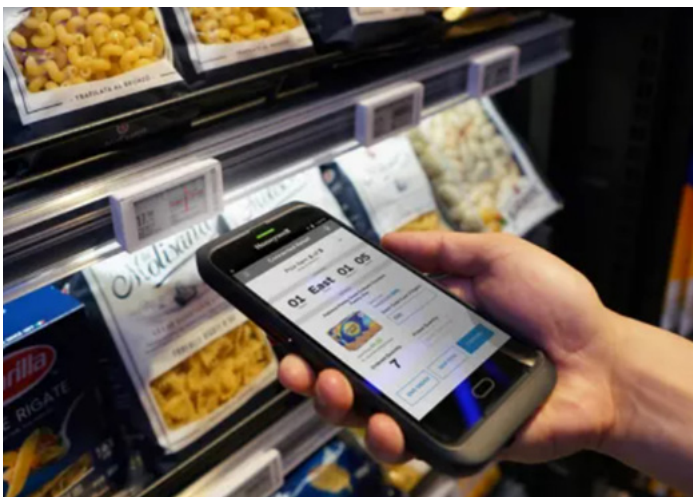
RUGGED MOBILE PRINTERS



VOICE DIRECTION



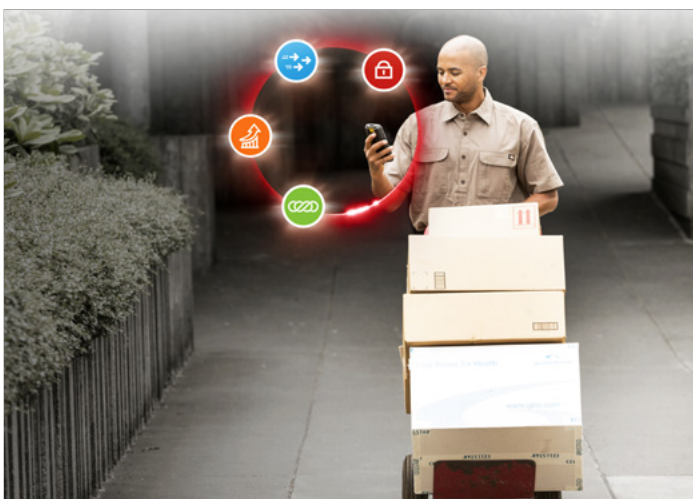
RFID



SMART TALK



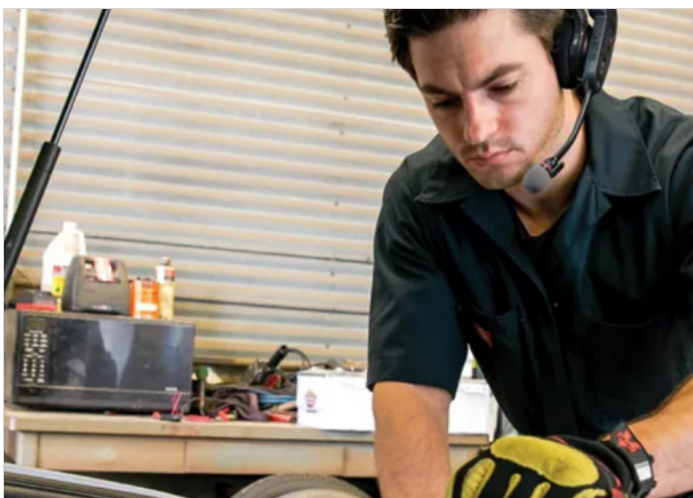
BUSINESS INTELLIGENCE



OPERATIONAL INTELLIGENCE



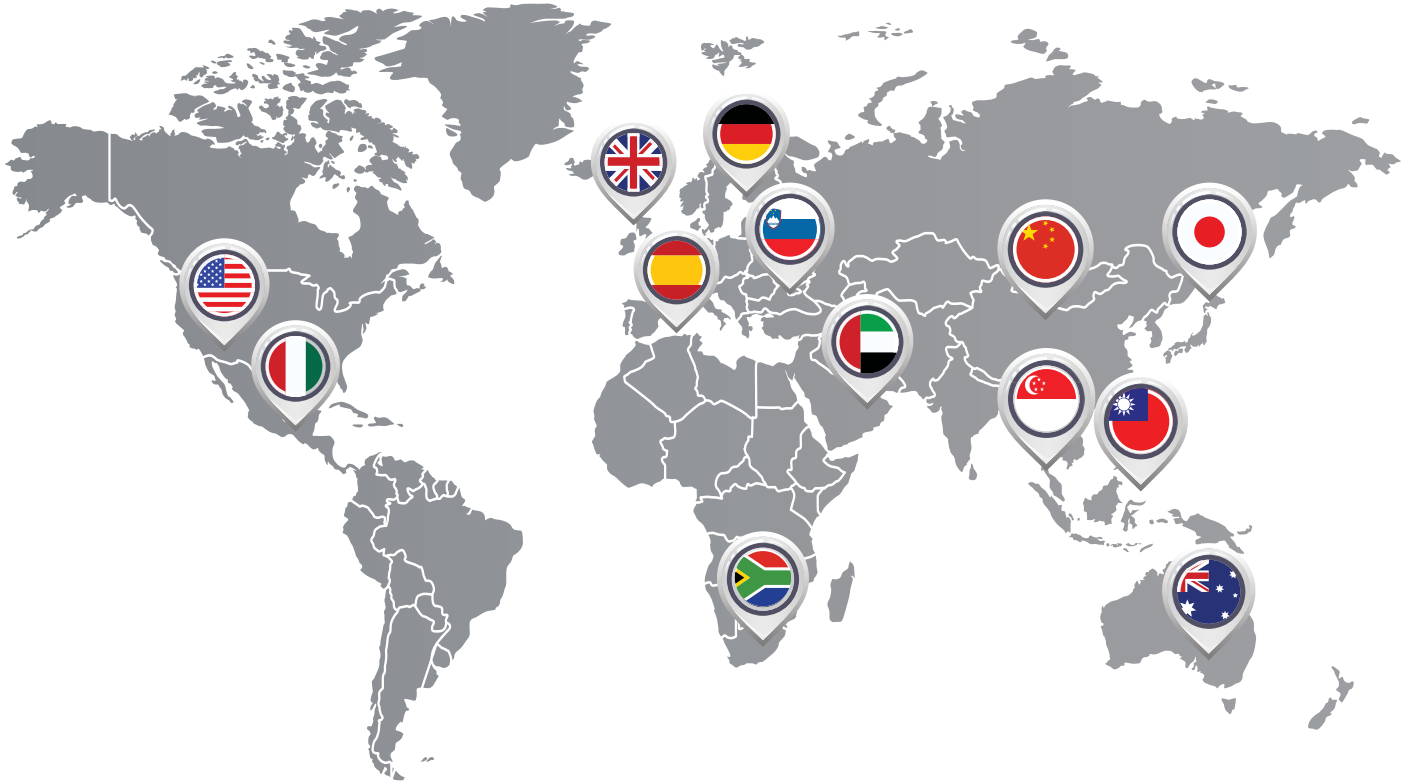
DEVICE MANAGEMENT



**WORKFORCE & TASK
MANAGEMENT**



DEVELOPMENT TOOLS



500+
Employees

12
Service & Support
Support Centers

12
Warehouse &
Repair Centers

12 Countries
Global Service
Structure

Tier-1 OEM
Leading
Manufacturer

Partner Tech Company Snapshot

27M
Capital
100M
Revenue 2020



A Brand of Partner Tech

E-POS International joined the Partner Tech family.



300+
Active Partners

2019 1st

Baldwin Multi-purpose payment
KIOSK for Modern Retail



2018 1st

Audrey and Ethan Stylish
Future- Proof POS for
Modern Retail



1998 1st
All-in-one PC based
touch terminal



**GLOBAL
MANUFACTURER**

Part of the QISDA / BENQ / AUO
GROUP: Top 100 Technology Leader

**FOUNDED
1990**



*The information on this page applies to Partner manufactured products only



State-of-the-art POS solutions and peripherals

Since 1990, Partner Tech has been a leading global developer and manufacturer of PC-based point of sale systems and peripherals. To satisfy constantly changing demands for better POS technologies, Partner Tech designs its solutions with cutting-edge functions and features for all types of POS applications and environments, whether compact all-in-one systems or mobile ordering terminals.

To achieve state-of-the-art POS solutions and peripherals, Partner Tech's production is held to the highest industrial standards. This includes component selection, circuitry development, mechanical construction, and housing design. Before products go into mass production, Partner Tech performs all required international tests for safety and conformity. As a result, Partner Tech can make the following product longevity and quality guarantees:

- ▶ Product warranty up to 5 years *Subject to terms and conditions
- ▶ Parts availability of 7 years
- ▶ 60,000 hours of MTBF (Mean Time Between Failures)
- ▶ 100% component derating to enable longer lifetime.

In 2015, Partner Tech identified E-PoS International LLC as the powerhouse in the Middle East. Over the last 20 years, E-PoS had built such a strong brand, and in 2017, E-PoS joined the Partner Tech family. Today, E-PoS is a brand of Partner Tech Middle East FZCO.





1000 DPPM QUALITY TARGET
7 - YEARS LONGEVITY
UP TO 5 - YEARS WARRANTY
60K HOURS MTBF
100% COMPONENT DE-RATING

OUR COMMITMENT, SERVICE & QUALITY ASSURANCE



Product warranty up to 5 years
*Subject to terms and conditions



Parts availability of 7 years



60,000 hours of MTBF



100% component derating to enable a longer lifetime



Premium Service & Support

*The information on this page applies to Partner manufactured products only



AUTHORIZED DISTRIBUTOR OF HONEYWELL



HONEYWELL OPERATIONAL INTELLIGENCE



A Suite of Solutions to Reduce Device Total Cost of Ownership and Improve Productivity



Workflow Automation

Automatically manage the most common asset issues at the edge



Data Analytics

Enable business/process optimization



Ruggedized Asset Management

React to issues in real-time and reduce business impact



Enterprise Connectivity

Extensible/flexible to fit your needs

Honeywell

FEATURED PRODUCTS

The Latest Productivity & Workflow Solutions.



RT10
Enterprise Tablets



EDA61k
Enterprise Mobility



NEW
EDA52
Enterprise Mobility



EDA51
Enterprise Mobility



HF680
2D Hands Free
Scanning



Voyager XP
2D Performance
Scanning

Xenon XP
2D Performance
Scanning



Industrial Printers
SMART Label Solutions



PC42T
Label Printing



RP-Series
Rugged Mobile Printing



AUTHORIZED DISTRIBUTOR OF HONEYWELL



ENTERPRISE MOBILITY



Boost Productivity with Honeywell Enterprise Mobility



RT10 (Windows / Android)



EDA52



EDA51



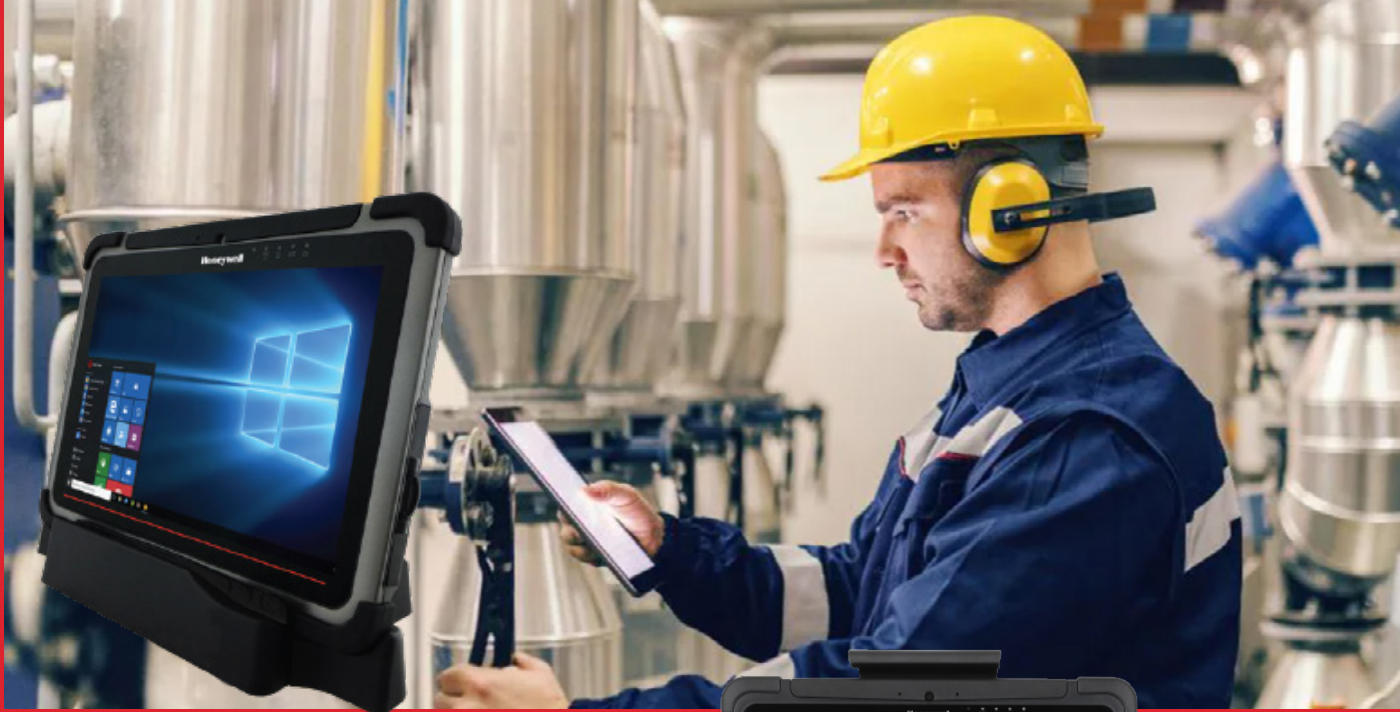
EDA61K



CK65



NEW



ENTERPRISE MOBILITY

RT10

10.1" RT10 ENTERPRISE TABLET

Keep workers and managers connected by providing them with the data and functionality they need to boost productivity.

- 10.1-inch, 800 NIT screen
- 4 ft. MIL-STD-8100g drop specification, IP65 rating
- Android / Windows options
- WLAN and WWAN connectivity options
- 5,900 mAh standard and 10,280 mAh extended battery options
- Vehicle mounting accessories for use on forklifts and other equipment in the warehouse
- Hand or shoulder-strap accessories
- Integrated barcode scanner
- Optional FlexRange barcode scanner, capable of scans 35 feet away

RT10A

10.1" Android Rugged Enterprise Tablet

[DOWNLOAD DATASHEET](#)

RT10W

10.1" Windows Rugged Enterprise Tablet

[DOWNLOAD DATASHEET](#)



Vehicle docks for forklifts & multiple accessories for various workflows



Smart Talk Application



Operational Intelligence





EDA71

ENTERPRISE TABLET



EDA71

7" SCANPAL EDA71 ENTERPRISE TABLET

The ScanPal™ EDA71 is Honeywell's enterprise-ready tablet that provides real-time connectivity for business-critical applications and efficient data capture capabilities.

- The ScanPal EDA71 supports Android O, P, and Q, providing the lifecycle you need. Currently, EDA71 is loaded with Android 8 and 10
- Enhanced network connectivity capabilities, including 802.11 a/b/g/n/ac, 2x2 MIMO WLAN, Bluetooth®: 4.2, and NFC.
- A sleek, modern, and contemporary design plus enterprise-grade ruggedness. Built tough to withstand 1.2 m (4 ft) drops to concrete, and 200 0.5 m tumbles.
- A new rotating handstrap makes it easy to scan barcodes while holding the tablet with one hand, and convenient to show the screen to a customer.
- New memory options, new scanning options, and a powerful new processor platform coupled with new accessories make the ScanPal EDA71 ideal for a wide range of customer needs.



EDA71

ScanPal EDA71 Enterprise Tablet

[DOWNLOAD DATASHEET](#)





ENTERPRISE MOBILITY

EDA52



NEW 5.5" SCANPAL EDA52 MOBILE COMPUTER

Reliable and secure connectivity between frontline workers and back-end business systems. Designed for use in retail, transportation & logistics, manufacturing, healthcare, and public service applications.

- Android 11
- 5.5-inch Corning Gorilla Glass touchscreen
- 4500mAh battery
- 3/32GB, 4/64GB, 6/128GB optional memory
- Qualcomm Snapdragon octa-core 2.0GHz processor
- Wi-Fi 5, Bluetooth 5.1, 4G LTE connectivity, NFC, GPS
- One nano SIM plus one eSIM
- IP67, withstands Multiple 1.3m (4.3ft) drops
- Battery Runtime: more than 12 hours



Android Enterprise Recommended

2 PIN Enterprise-Class Mobile Computer



EDA52

5.5" ScanPal™ EDA52 mobile computer

[DOWNLOAD DATASHEET](#)



ENTERPRISE MOBILITY

EDA51

5" SCANPAL EDA51 MOBILE COMPUTER

Increase productivity in light duty retail, DSD, pickup and delivery, and field service applications.

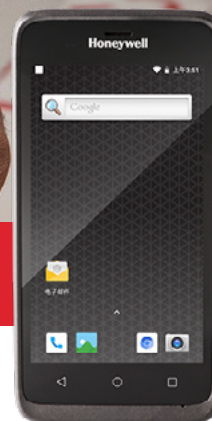
- 5" Display with Multi-touch capacitive (CTP), GFF
- IP64 Sealing, withstands multiple 1.2m drop
- 272g weight
- Android OS, Qualcomm Snapdragon 450 octa-core processor
- WLAN, Bluetooth, NFC, GPS connectivity options
- Honeywell's best-in-class N6603 imager scanner
- 13-megapixel autofocus color camera
- Removable 4,000 mAh lithium ion battery pack that lasts 12 hours
- Optional accessories: Hand strap, Scan Handle, Homebase, battery charger



EDA51

5" ScanPal™ EDA51 mobile computer

[DOWNLOAD DATASHEET](#)



NEW! DISINFECTANT-READY HOUSINGS OPTION



Multiple accessories for various workflows





ENTERPRISE MOBILITY



EDA61K

4" SCANPAL EDA61K MOBILE COMPUTER

Designed for small and medium businesses to conduct mission critical workflows in light-duty warehouse, distribution center and retail applications.

- 4" Display with Multi-touch capacitive (CTP)
- IP65 Sealing, withstands multiple 1.5m drops
- 435g weight
- Android OS, Qualcomm Snapdragon SDM450, 1.8 GHz octa-core
- WLAN, Bluetooth, NFC, Integrated GPS connectivity options
- EX20, N6703SR imager scanner
- 13 MP Camera, with Autofocus and LED Flash
- Removable 3Li-Ion, 3.6 V, 7000 mAh battery, Runtime 25hrs
- Optional accessories: Single Charging Cradle, Hand Strap, Replacement Battery, Quad Battery Charger, Scan Handle



Multiple accessories for various workflows. The EDA61K enables small and medium businesses to profit from global e-commerce by ensuring the reliable flow of inventory

EDA61K

4" ScanPal EDA61K mobile computer

[DOWNLOAD DATASHEET](#)



CK65

ENTERPRISE MOBILITY

CK65



4" CK65 ULTRA-RUGGED MOBILE COMPUTER

The industry's most advanced ultra-rugged mobile computer that's ready for the toughest DC environments and the broadest range of workflows.

- 4" Display with Extra Durability and Outdoor Readable, Rugged Multi-touch capacitive (CTP)
- Imaging-based barcode scanning with read ranges from 6 in. to 50 feet, IP64 Sealing, withstands multiple 2.4m drops
- Android Enterprise OS, 2.2 GHz Qualcomm® 64-bit Snapdragon™ octa-core processor
- WLAN, Bluetooth, NFC, VoIP Supported, Mobility Edge Hardware Platform connectivity options
- Alphanumeric(51 keys) and Numeric(38 keys)
- 13.0-megapixel color camera with autofocus
- Provides 18 hours of battery life and hot swap technology
- Optional accessories: Single Charging Cradle, Hand Strap, Replacement Battery, Quad Battery Charger, Scan Handle



CK65

4" CK65 mobile computer

[DOWNLOAD DATASHEET](#)



PERFORMANCE SCANNING



Boosting the Decoding Range and Improving Efficiency



1950g / 1952g



1470g / 1472g



HF680



Orbit 7120



Voyager 9540



Voyager 1202g



PERFORMANCE SCANNING



1950G / 1952G

XENON EXTREME PERFORMANCE 2D SCANNER

High performance scanners designed for environments that demand high-accuracy scanning whether at a distance or up close in retail, healthcare, manufacturing and warehousing sectors.

- High scanning accuracy for mission-critical applications
- Can easily read damaged or poorly printed barcodes
- Class-Leading Durability And Reliability
- IP52 ingress rating for water and dust
- Backward compatible with Xenon accessories including bases with the FW update
- OpIntel Ready—update remotely and gain workflow insights, lowering maintenance costs and improving operational efficiencies
- Easy software updates with the Honeywell Scanner Management Utility (SMU)
- Available in black, white and healthcare plastics



1950G

Xenon™ Extreme Performance Scanner

[DOWNLOAD DATASHEET](#)

1952G

Xenon™ Extreme Performance Scanner

[DOWNLOAD DATASHEET](#)



1950g
Corded

1952g
Cordless

NEW! DISINFECTANT-READY HOUSINGS OPTION



Multiple accessories for various workflows



Honeywell Scanner Management Utility (SMU)



Operational Intelligence



PERFORMANCE SCANNING



1470G / 1472G

VOYAGER EXTREME PERFORMANCE 2D SCANNER

Highly accurate and fast scanning for in-store retail workflows that require industry-leading 1D/2D scanning solution in a durable form factor. Enhanced performance even on damaged and difficult-to-read codes.

- High scanning accuracy for mission-critical applications
- Can easily read damaged or poorly printed barcodes
- Class-Leading Durability And Reliability
- IP42 (1472g) or IP52 (1470g) ingress rating for water and dust
- Engineered to withstand 30 1.8 m (6 ft) drops to concrete
- Honeywell Operational Intelligence software delivers on-demand scan insights
- Easy software updates with the Honeywell Scanner Management Utility (SMU)
- Fully backward-compatible with any Voyager accessories you already have



1470G

Voyager™ Extreme Performance Scanner

[DOWNLOAD DATASHEET](#)

1472G

Voyager™ Extreme Performance Scanner

[DOWNLOAD DATASHEET](#)



1470g
Corded

1472g
Cordless

NEW! DISINFECTANT-READY HOUSINGS OPTION



Multiple accessories for various workflows



Honeywell Scanner Management Utility (SMU)



Operational Intelligence



HF680

PERFORMANCE SCANNING

HF680



HF680 2D HANDS-FREE AREA-IMAGING SCANNER

For single-location workflows in retail, hospitality, or transportation environments that require high-volume and mobile phone scanning, it's simply faster and easier to do the job if both hands are free to handle items.

- **FASTER SCANNING:** With its Megapixel sensor and 1Ghz processor, the Orbit HF680's fast scanning will speed customers through the check-out line. Can easily read digital or damaged barcodes.
- **MODERN STYLING:** The perfect blend of affordability, performance and style. Exceptional performance and compact design at an exceptional price.
- Simplify installations with OPOS/JPOS drivers that ensure scanner compatibility with various POSs
- Minimizes checkout delays.
- Designed to withstand 1 m drops
- Host interface: USB, RS-232



HF680

2D Hands-Free Area-Imaging Scanner

[DOWNLOAD DATASHEET](#)



OMNIDIRECTIONAL HANDS-FREE LASER SCANNER

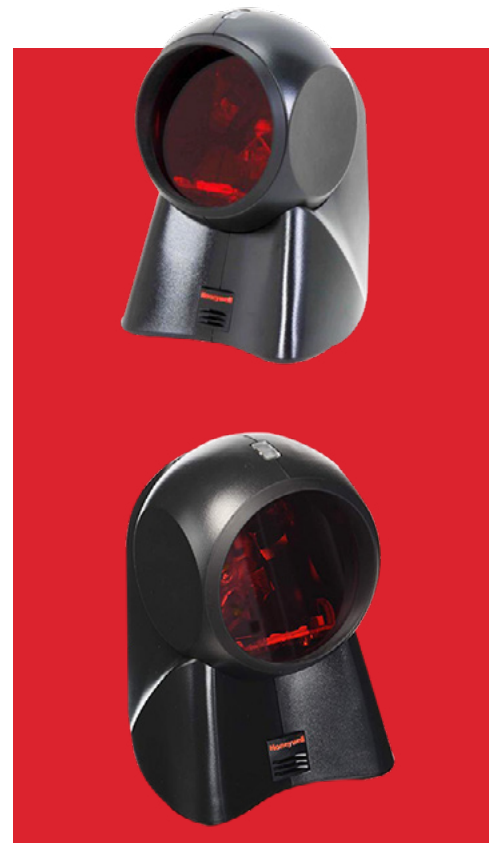


ORBIT 7120

ORBIT 7120 HANDS-FREE 1D OMNIDIRECTIONAL SCANNER

Aggressive omnidirectional scanning solution for convenience retail applications where counter space is at a premium. The Orbit 7120 scanners are innovative, elegant and affordable with an award-winning design for faster check-out solutions.

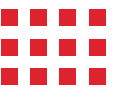
- Award-winning design that's compact, lightweight and rugged
- Optimize scan performance and first pass read rate.
- Retail operations can protect their POS investment with free firmware updates via MetroSet 2 software and a standard PC.
- A 20-line scan omnidirectional pattern provides aggressive scanning as an additional benefit to hand presentation applications.
- Omnidirectional Scanning: 1120 scan lines per second.
- An adjustable scan head enables users to tilt the scanner 30° for targeted scanning of larger products.



7120

Orbit 7120 Hands-Free Scanner

[DOWNLOAD DATASHEET](#)



9540

SINGLE-LINE LASER SCANNERS



9540

VOYAGER 9540 1D SINGLE-LINE LASER SCANNER

The Voyager series has become the industry benchmark for value and performance. These sleek scanners feature patented, automatic infrared activation and decode all standard 1D barcodes includes CodeGate™: technology for menu scanning applications.

- Automatic Trigger: Use scanner as either a hand-held device or a fixed presentation scanner when mounted in the stand.
- 72 scan lines per second
- 650-nanometer Laser: High-visibility laser allows user to place laser line on selected bar code.
- includes CodeGate™: technology for menu scanning applications.
- For presentation scanning, Honeywell offers a stand with automatic in-stand detection technology.
- Flash ROM: Future proof POS system with free firmware updates via MetroSet®:2 software and standard PC.
- Sealed to resist airborne particulate contaminants
- Host interface: USB, RS-232, Keyboard Wedge



9540

Voyager 9540 General Duty Scanner

[DOWNLOAD DATASHEET](#)





WIRELESS SINGLE-LINE LASER SCANNER



1202G

VOYAGER 1202G ID WIRELESS SCANNER

Voyager™ 1202g (wireless) laser barcode scanners are built on the world's best-selling single-line laser scanner platform. They aggressively scan virtually all linear barcodes. And they do an exceptional job of reading poor quality and even damaged barcodes.

- Long Battery Life and Tool-Free Battery Removal: The user-preferred Lithium ion battery provides 12 hours or more of use, depending on scanning volume
- Remote MasterMind™ Ready: Reduces total cost of ownership by providing a turnkey remote device management solution
- Simply press the button on the base to locate your lost scanner: Voyager 1202g responds with a series of beeps and blinking lights
- Bluetooth® WirelessTechnology: Facilitates scanning of all standard 1D bar codes 10 meters (33 feet) or more away from the base
- IP42-rating, Single shock-mounted PCB, withstands 30, 1.5m drops
- Hands-free presentation scanning : updated object detection and automatic in-stand detection and configuration.



1202G

Voyager 1202g General Duty Scanner

[DOWNLOAD DATASHEET](#)



1250G

SINGLE-LINE LASER SCANNERS



1250G

VOYAGER 1250G 1D SINGLE-LINE LASER SCANNER

The Voyager™ 1250g single-line laser barcode scanner. It aggressively reads linear barcodes up to 58.4 cm (23 in) away, making the job more comfortable and productive for your team. And the scanner is quick to switch to hands-free scanning with the included stand.

- Automatic Interface Detection: Supports all popular interfaces in one device. Automatic in-stand detection and configuration increases throughput with true object detection.
- Extended Depth of Field: Scans out-of-reach items with ease and allows users to scan 13 mil bar codes from as far away as 17.6 inches (447 mm).
- Ergonomic Design: Fits comfortably in most hands, reducing user fatigue in scan-intensive applications.
- CodeGate® Technology: Enables users to ensure that the desired bar code is scanned before transmitting data, making the scanner ideal for use in menu scanning applications.
- Remote MasterMind™ Ready: Remote device management solution
- Hands-free presentation scanning with the included stand.



1250G

Voyager 1250g General Duty Scanner

[DOWNLOAD DATASHEET](#)





PERFORMANCE PRINTING



High Performance, Compact and Economical industrial Printing Solutions



PM45

PM43

PC42T Plus

PC42D

RP-Series





INDUSTRIAL PRINTER



PM45

NEW SMART LABEL SOLUTIONS INDUSTRIAL PRINTER

The Honeywell PM45 is built for smart label solutions that help enterprises enhance automation and intelligence in manufacturing and supply chain management for high operating efficiency.

- The PM45 printer is the first industrial printer with WWAN connectivity with track-and-trace functionality for M2M and IoT applications
- Print speeds of up to 14ips. With print registration of up to ± 0.5 mm
- The PM45 printer is also scalable to incorporate RFID, parallel, industrial, and applicator interfaces to address your unpredictable business needs in the future
- The PM45 can support a wide range of media – including ink-in and ink-out ribbons with one-inch core size – enhancing the time between media resupply
- Smart printing capability allows users to configure and print without the need for a host computer
- Operational Intelligence MDM tool provides predictive analytics and data on printer health, while SOTI and PrintSet MC are also supported



PM45

PM45 Industrial Printer

[DOWNLOAD DATASHEET](#)

Increase production efficiency and supply chain transparency in food and beverage, pharmaceuticals, manufacturing, warehouse, and distribution center management.



MID-RANGE INDUSTRIAL PRINTER



PM43

PROGRAMMABLE SMART INDUSTRIAL PRINTER

Programmable PM series smart printers offer you reliable performance for uptime assurance, quick deployment and integration, and the fastest throughput in their class –: no PC required. The PM series are available in a variety of enclosure sizes and door types to fit your exact application.



- Ready for the future, with IPv6 support, plus CCX and Wi-Fi certifications.
- Run sophisticated apps right in the printer with industry-leading Honeywell Smart Printing supporting C#.
- Fast printing speed of up to 12 inches per second.
- Comprehensive printer command language support, including ZSim2, makes upgrading easy. Available in black, white and healthcare plastics
- Large color, multilingual, tamperproof touchscreen or icon user interface.



PM43

PM43 Mid-Range Industrial Printers

[DOWNLOAD DATASHEET](#)

Ideal for applications in distribution centers, warehouses, manufacturing operations, and transportation centers.



4-INCH DESKTOP PRINTER



PC42T PLUS

PC42T PLUS THERMAL TRANSFER BARCODE PRINTER

The PC42t is an economical solution that is compact and easy to use desktop printer for any light-duty thermal printing application

- The PC42t is an economical solution for light-duty thermal printing application
- Easy to use, with a quick-opening design for media replenishment
- Compact size, common media specifications, and support for ZPL II® and EPL emulation
- Maximum print width is 4.1 Inches, Resolution is 203 DPI
- Quiet, reliable operation and intuitive design
- The PC42t includes broad, industry standard connectivity
- Up to four ports are built-in: standard USB device and USB host, plus optional serial or serial+Ethernet.



PC42T

PC42T Desktop Thermal Transfer Barcode Printer

[DOWNLOAD DATASHEET](#)



PC42D

4-INCH DESKTOP PRINTER



PC42D

PC42D DIRECT THERMAL BARCODE PRINTER

The PC42d printer is well suited for a variety of low-to-mid intensity thermal printing applications –: such as electronic express and logistics way-bills, healthcare laboratory labels and wristbands, retail price tags and receipts, boarding passes and the like.

- Easy to use with a solid double-layer housing, simple paper-loading design, media auto-centering, and auto-sensing of printing languages.
- Includes integrated command languages: ESim (EPL), ZSim (ZPL-II), DPL, and Direct Protocol (DP) with preset Chinese fonts.
- A high-quality printhead and compatibility with a wide range of thermal media ensures excellent printing results.
- Compact yet powerful: a perfect combination of economy and quality. Printing speed is up to 200 mm/s (8 ips).



PC42D

PC42D Desktop Direct Thermal Barcode Printer

[DOWNLOAD DATASHEET](#)



ULTRA-RUGGED MOBILE PRINTER



MPD31D

MPD31D 3" ULTRA-RUGGED MOBILE PRINTER

The MPD31D is a light weight mobile printer with best in-class performance and economical price. It can be used in manufacturing, warehouse, logistics, retail, public utilities and healthcare.

- Small size and light weight up to 368g, easy to carry in different scenarios
- 90 mm/s(3.5ips) high speed printing and strong battery power support printing 300 meters continuously.
- Support various Intelligent Terminals, PDA integration printing. Provide Android, IOS to integrate with 3rd party terminals. Support customized local language for different regions.
- Flexible label and receipt change, just 3 Steps within 1 min to change between two print modes.
- The printer provides superior media capacity and supports labels with/without a liner: can also sense gaps between labels or black marks on the top or bottom of media.
- Ultra-rugged design: 1.5 m (4.9 ft) drop tested, tested to 1000 0.5 m (1.5 ft) tumbles, IP54 dust and moisture ingress and wide operating temperature range.
- High-capacity battery. Battery age provided as part of printer analytics.



MPD31D

MPD31D Ultra-rugged Mobile Printer

[DOWNLOAD DATASHEET](#)



RUGGED MOBILE PRINTER

RPE SERIES



RPe SERIES 2" / 4" RUGGED MOBILE PRINTERS

If you're looking for an ultra-rugged and reliable mobile receipt printer for route accounting, direct store delivery, citation printing, car rental return receipts and more, look no further than the RPe Series. This tough competitor withstands drops and exposure to dust and water, and is designed for all-day printing with a full-shift battery life.

- Ultra-rugged: survives 2 m (6.6 ft) drops and 1,000 0.5 m (1.6 ft) tumbles, has an IP54 rating for dust and moisture ingress, and operates over a wide temperature range
- Lightweight, ergonomic design allows workers to carry and operate the printer with ease
- High-discharge current lithium-ion cell battery can be swapped without resetting the printer or losing connectivity
- Operational Intelligence solution provides analytics to help manage, track, and optimize printer assets, enabling proactive maintenance and replacement
- The printer provides superior media capacity and supports labels with/without a liner: can also sense gaps between labels or black marks on the top or bottom of media.



RPe Series

RPe Series Rugged Mobile Printer

[DOWNLOAD DATASHEET](#)



PRODUCT CATALOG

PARTNER

CARE . TRUST . RESPONSIBILITY

**YOUR TECHNOLOGY STORE
PARTNER**



PRODUCTIVITY SOLUTIONS

THE LATEST HONEYWELL PRODUCTIVITY & WORKFLOW SOLUTIONS



CONTACT US

Partner Tech Middle East FZCO

Office No. 1004, 10th Floor,
Aspect Tower,
33a Happiness Street,
Business Bay, Dubai, UAE



+971 4 447 4273



sales@partnertechme.com



ae.partnertechcorp.com



PARTNER
CARE . TRUST . RESPONSIBILITY



AUTHORIZED DISTRIBUTOR OF HONEYWELL